

Overhead Conveyor  
Single Conveyor  
SC-SD



YOUR WORLDWIDE LINK TO ULTIMATE CONVEYOR SOLUTIONS



Single Conveyors are commonly used for moving components through the same process, e.g. painting lines.

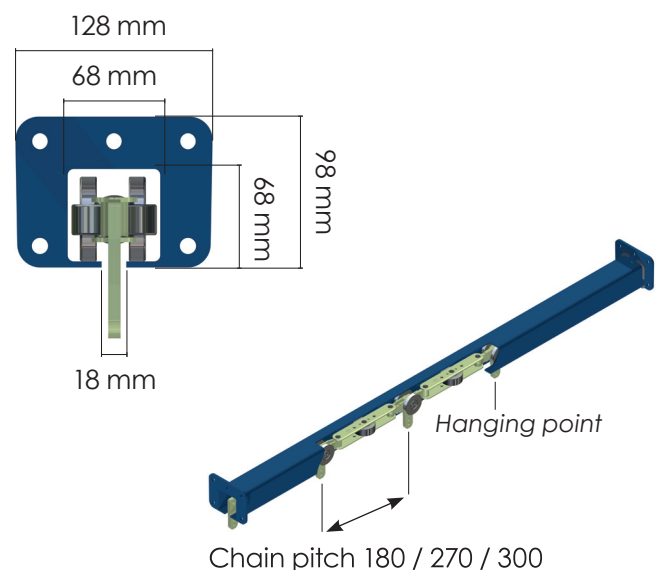
The components are transported either in one or two fixed hanging points depending on size and weight of the product. In the pictures below the various mounting accessories are shown and max. payload for each.

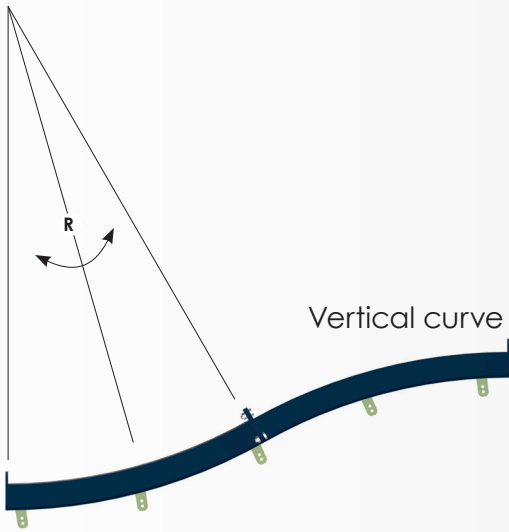
Our single conveyor consists of a standard high grade steel C-profile welded with flanges and a cardan chain inside. The cardan chain forms the base in the system and is driven by one or more drive units powered by an electrical gear motor. The conveyor can be driven in several modes. Stepping mode with or without smooth start/stop ramps, and continuously with or without variable speed. For variable speed a frequency converter is required for the motor.

Depending on the area of installation CT offers the conveyor tracks with different surface coatings as per customer specification. Most components are standard components which enables short delivery time. Besides that one of our specialties is custom designs. What we don't have we simply invent.

In addition to the conveyor system CT offers the possibility for integrated electrical control of the system. Our in-house control systems department has many years of know-how in delivering the control systems and programming the software. It comes with options such as, a detailed operator interface for easy faultfinding as well as online support via a CT Internet link.

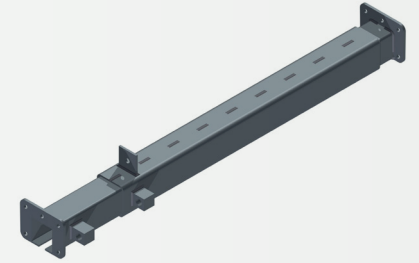
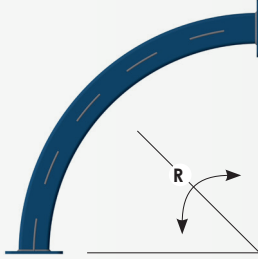
The conveyor system is delivered with a full documentation package. This includes mounting instructions, maintenance and operations instructions along with spare part list, layouts and components drawings. Everything you need in a turnkey system.



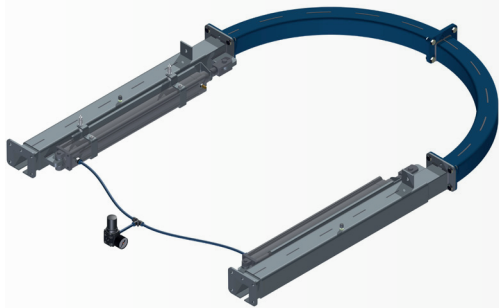


Vertical curve

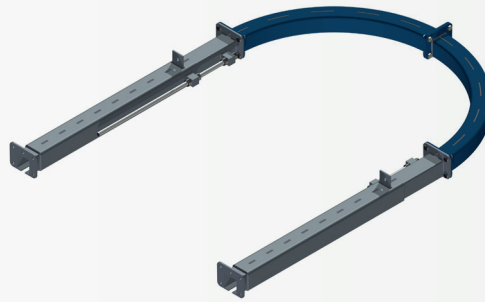
Horizontal curve



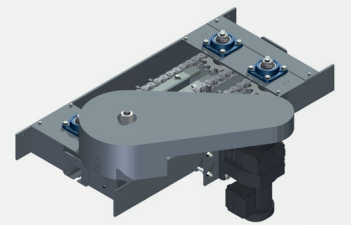
Expansion Piece



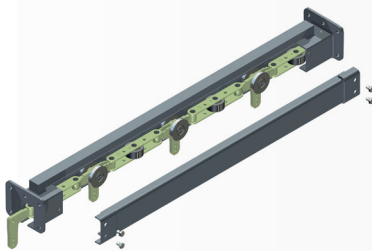
Tension station Pneumatic



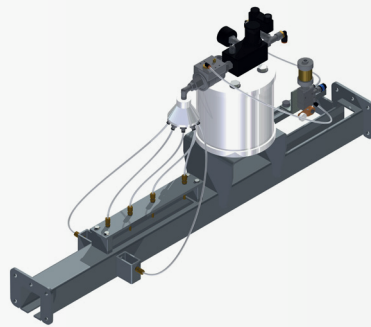
Tension station manual



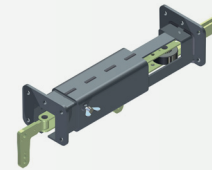
Double sided driving Unit



Mounting Profile



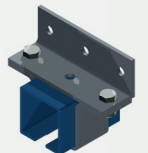
Automatic lubricator



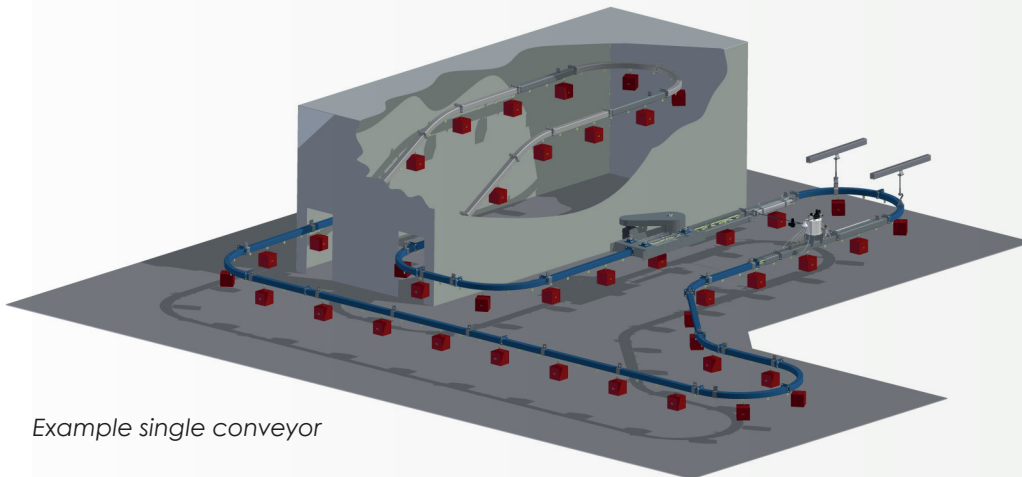
Inspection Piece



Oven Clamp



Piatti Clamp



Example single conveyor

## Technical data:

---

**Max. load:**

Per meter – 110 kg., hanging from 1 point – 90 kg.,  
hanging from 4 points traverse – 360 kg.

---

**Method of running:**

Fixed engagement.

---

**Cardan chain:**

Pitch: 180, 270 or 300 mm.  
Bearings: Open or shielded bearing fitted with grease.  
Max. chain pull: 8.000 N.  
Breaking point: 37.000 N.

---

**Surface treatment:**

Yellow chrome(not wheel and axle).

---

**Lubrication:**

Automatic lubricator – high temperature oil CT250.

---

**Max. Average Temperature:**

250° C.

---

**Standard lengths – straight profiles:**

3.000 mm.

---

**Standard curve radius for cardanchain, pitch 180:**

Horizontal: R-315, R-500, R-700, R-1000, R-1500, R-2000 mm.  
Vertical: R-700, R-1000, R-2000 mm.

---

**Standard curve radius for cardanchain, pitch 270:**

Horizontal: R-700, R-1000, R-1500, R-2000 mm.  
Vertical: R-1000, R-2000 mm.

---

**Standard curve radius for cardanchain, pitch 300:**

Horizontal: R-700, R-1000, R-1500, R-2000 mm.  
Vertical: R-1250, R-2000 mm.

---

FOR MORE  
INFORMATION!



**Headoffice Denmark:**

Conveyor Technique A/S | Glarmestervaenget 8 | DK-4700 Naestved

Phone. +45 5573 3400

sales@ctas.dk | www.ctas.dk