

Overhead Conveyor Manual System Type F 50



© Conveyor Teknik A/S

YOUR WORLDWIDE LINK TO ULTIMATE CONVEYOR SOLUTIONS



The F50 conveyor are used for manual transport of products suspended from a trolley. Our system consists of a standard high grade steel C-profile welded with flanges and a trolley inside. Trolleys can be mounted with a turning device for manual or automatic turning of products during e.g. spraying in painting booth. The system allows the possibility of automatic transportation of the trolleys in specific areas of the conveyor system.

For larger and heavier products 2-4 trolleys are built together with traverses and/or a load bar, from which the products are suspended.

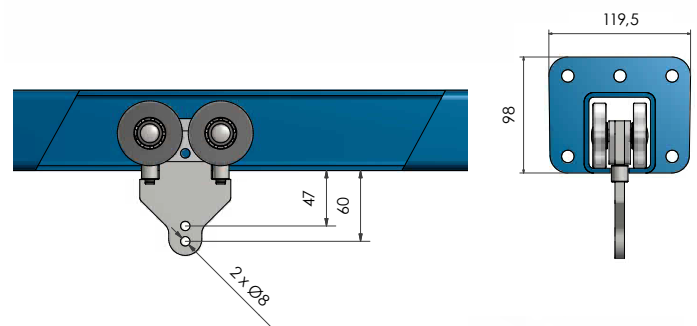
Depending on the area of installation CT offers the conveyor tracks with different surface coatings as per customer specification. Most components are standard components which enables short delivery time. Besides that one of our specialties is custom designs.

Size of track:

Type F50: 60x68 mm. slot = 16 mm.

Installation dimensions: H = 98 mm. x W = 120 mm.

Straight track

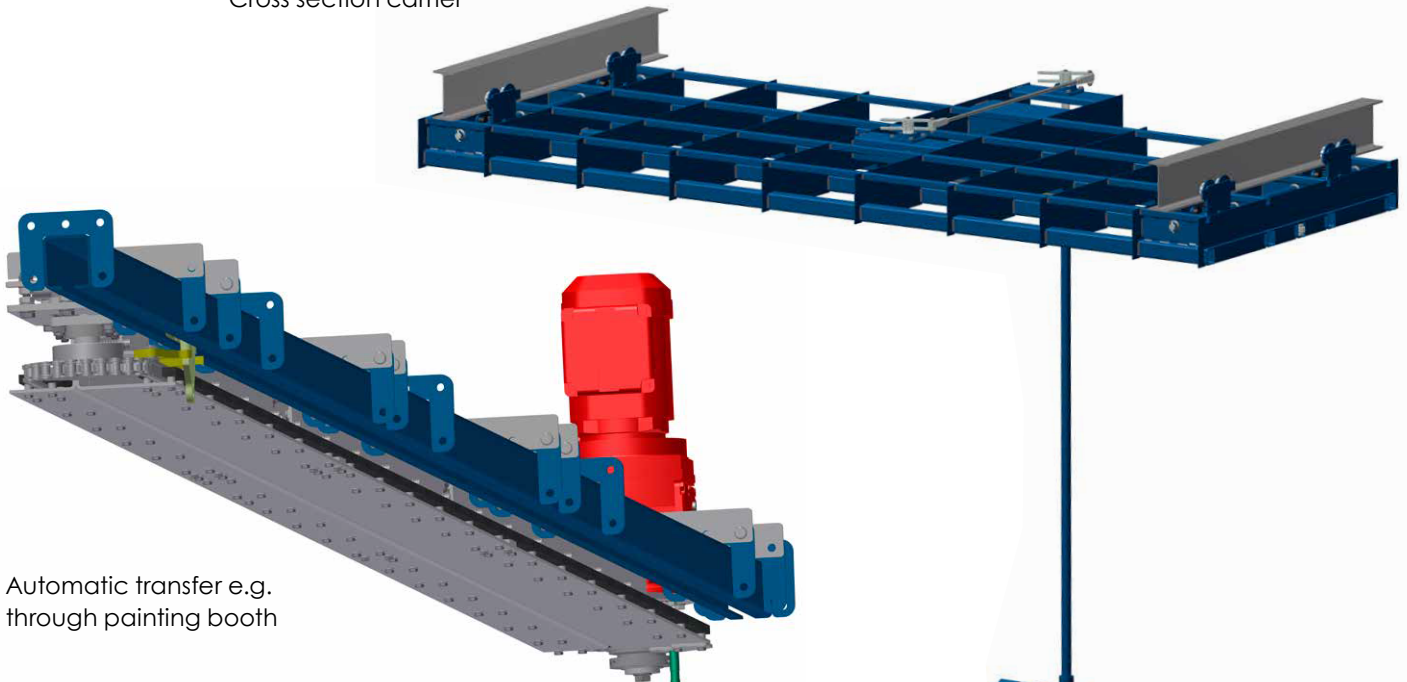


Mounting clamp for oven

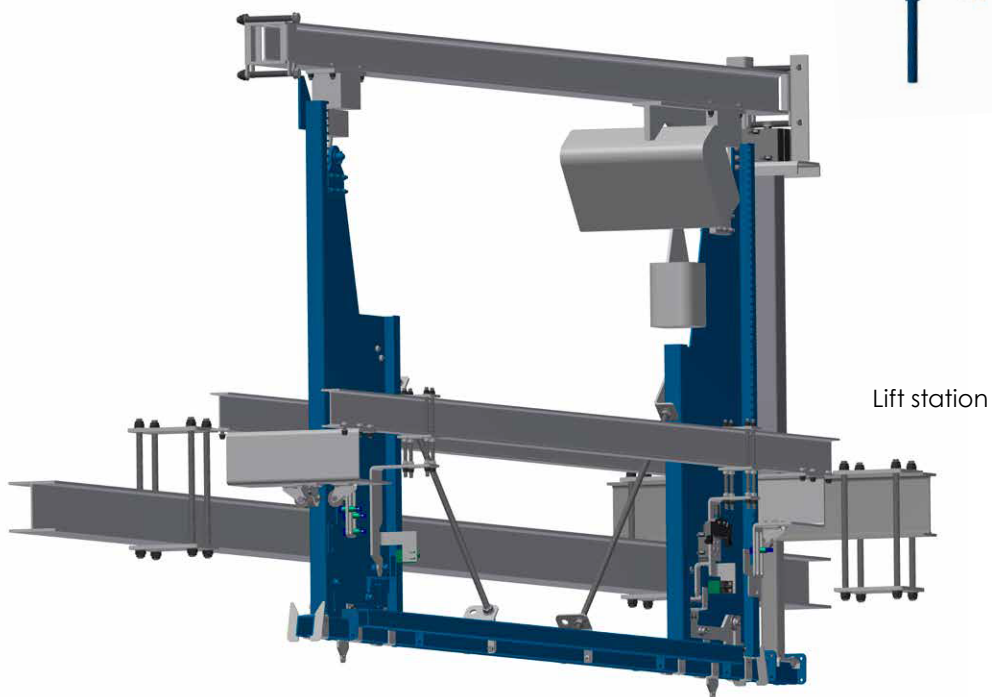


Mounting clamp - Piatti

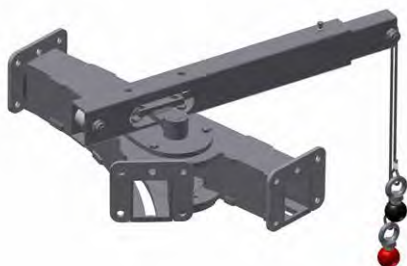
Cross section carrier



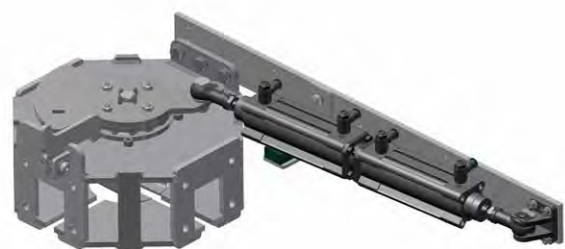
Automatic transfer e.g. through painting booth



Lift station



Switch track



Turning cross

Technical data:

Max. Load each trolley arrangement:

1 trolley (4-wheeled)-200 kg., 2 trolleys-400 kg.(with load bar)
4 trolleys-800 kg. (with traverses and load bar)

Method of Running:

Manual.

Accumulation possibilities:

Linear, 30°, 45°, 60°, 90°, 120°.

Min. buffer length:

With 1 trolley = 120 mm. With 2 trolleys = 300 mm.

**Min. distance between front-trolley arrangement and
back-trolley arrangement, for trolleys running in cross section via switch tracks.**
600 mm.

Trolley bearings:

Open or Shielded bearing fitted with grease.

Lubrication:

Spray bottle - high temperature oil CT250.

Max. Ambient Temperature:

250°C.

Standard lengths- straight profiles:

3.000 mm., fix length under 3.000 mm.

Standard horizontal curves radius- PF track:

R-500, R-700, R-1.000, R-1.500, R-2.000 mm.

Standard horizontal curves angle- PF track:

15°, 30°, 45°, 60°, 90°.

Standard vertical curves radius- PF track:

R-700, R-1000, R-1250, R-2.000 mm.

Standard vertical curves angle- PF track:

Up to 15°. (depending on work-load).

Switch track 45°:

Trolley, wire, pneumatic flip-flop or pneumatically operated.

Turning cross:

Wire or pneumatically operated.

Transfers:

Electrically operated with roller chain or cardan chain.

Lifting and lowering station:

Electrically or hydraulically operated.
Floor mounted.

Innovative custom designs:

Horizontal turning station for carriers, High Precision Carrier Fixation, Cross section carrier.

Headoffice Denmark:

Conveyor Technique A/S | Glarmestervaenget 8 | DK-4700 Naestved
Phone. +45 5573 3400
sales@ctas.dk | www.ctas.dk

FOR MORE
INFORMATION!

